



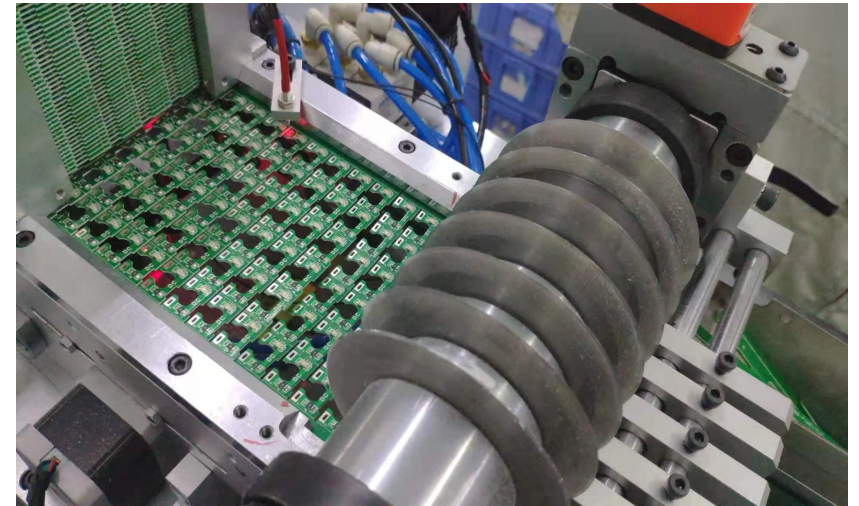
1. Able to be connected to the loaders and unloaders to realize **unmanned operation**.
2. **Easy** to install and set up.
3. Save **staff**, **time** and **effort**.
4. **Small** space occupation, **efficient** and **fast** operation.

Technical Parameters

Program	SD5140
Name	Multi Cutter
Size (L/W/H)	1850mm×850mm1100mm
Blade size	circular life ϕ 80mm
Blade material	SKD11 Imported High Quality High-Speed Steel
Board thickness	0.5-3mm
Unit production	around 1500 PC/h
Blade service life	around 500,000 times
Board length	50mm- ∞ mm
Board speed	0mm-500mm/s (speed adjustable motor)
Board width	4mm-300mm
Work air pressure	0.5-0.8map
Work voltage	220V/110V optional
Power	200W
Weight	around 160kg

Product analysis:

- ➔ **Versatile:** V-Cut products, one separator can meet the cutting requirements: PCBA products and light bar products;
- ➔ **Multifunctional:** online dividing& manual feeding;
- ➔ **High-efficiency:** It can realize high-efficiency operation and one-time dividing;
- ➔ **Simple line/model change:** Modular switching, the entire die can be switched at one time.



Solution:

1. Uploading: manual feeding;
2. Sub-board: automatic material distribution;
3. Versatility: Manually increase or decrease the die, and replace the die according to the product;
4. Discharging: belt discharging, manual receiving;
5. UPH: ①PCBA: about 5s a board, as an example in Figure 1: **≈ 2500 pcs** (small board) Product deviation value: 100 pcs
②Light strip board: about 10s each time, as an example in Figure 2 : **≈ 3500 pcs** (small board)
Product deviation value: 100 pcs
6. Operator: 1 person

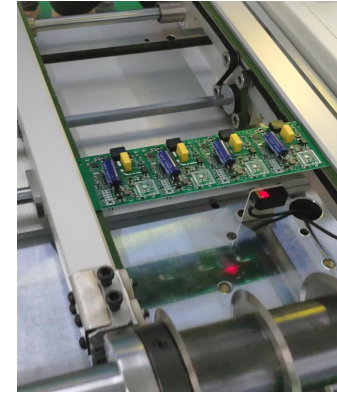


Figure 1

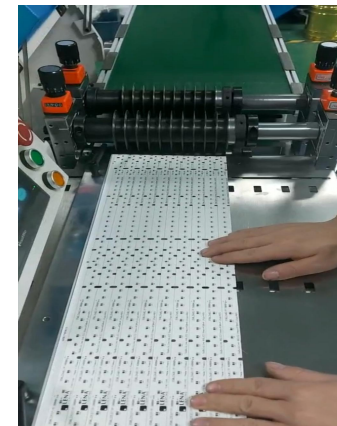


Figure 2

Solution analysis and evaluation:

Analysis:

- ➡ 1. There are two products, the PCBA board and the light strip board.
- ➡ 2. The same equipment: use different numbers and different models of modules for different board types.
- ➡ 3. Figure 1 divides the PCBA board, Figure 3 divides the light strip board.
- ➡ 4. Track feed: Compatible with dividing PCBA products and light bar products.

Evaluation:

1. Practicality: compatible with PCBA and light strips. The product is designed to meet the customer's vision of product diversification and high-efficiency operation.

2. Versatility: a. The minimum cutting width of PCBA: 4mm; b. The maximum width of the total board should be less than: 300mm.

3. Customization: The equipment can be customized to meet the increasing demand of customers through customization.

4. Description: As shown in the picture, the same equipment is used. Figure 3 shows the manual feeding and platform



Figure 1

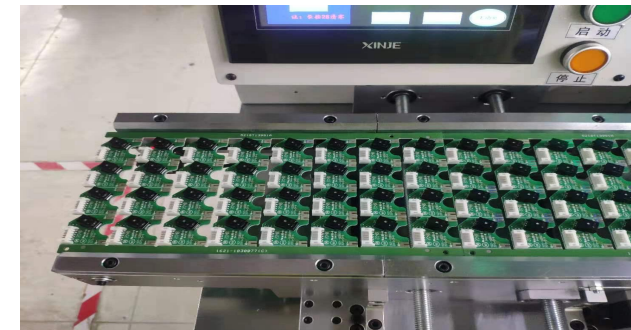


Figure 2



Figure 3

Operation process:

1. Manual track feeding, circuit board senses sub-board switch.

2. The product is fed to the cutter mouth, and the machine divides the boards.

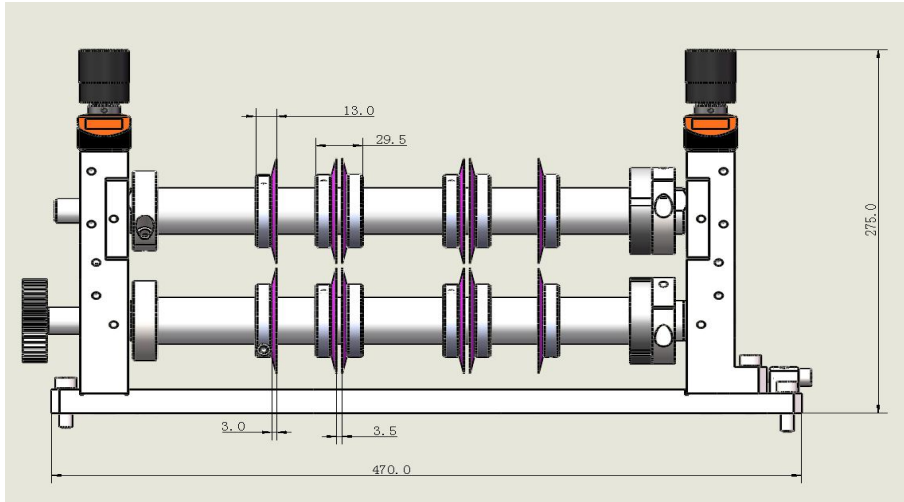
3. The cutting is OK, and the product is discharged.

4. After the material is discharged, the product is sensed in place, and the material is manually received.

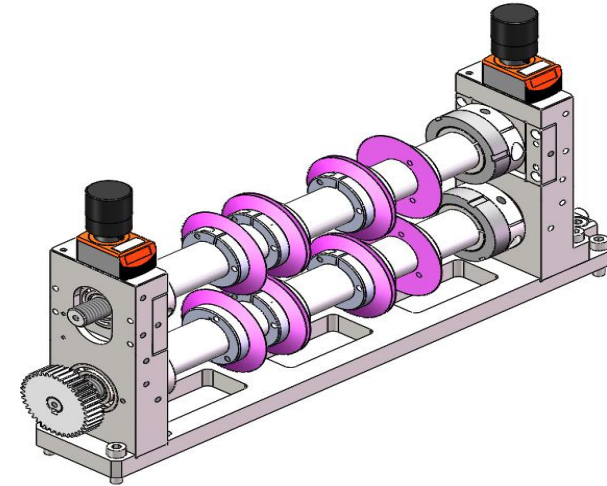
5. Complete a workflow.

6. Repeat steps 1-4.

Detail: Customized cutting die



Analysis: 1. Demand customization: The equipment is compatible with multiple types of products and can be customized according to customer needs.
2. Die customization: The die can be customized according to the customer's product dividing requirements.
3. The cutter is adjustable. Figure 1 is compatible with dividing different styles of PCBA boards. Figure 2 is used to divide light strips of different widths.



Evaluation: 1. Feasibility: Mature equipment and mature scheme design, representing the derivation and combination of other successful cases based on the original maturity.

Customized design: Three customized design parts: a. Incoming and discharging customization; b. Die cutting customization; c. Board cutting design.

Versatility: a. The minimum cutting width of the PCBA board edge: 4mm; b. The maximum width of the total board should be less than: 300mm.

Description: The product feeding method is selected according to customer needs.

Best After-sales service

- 7x24 Worldwide Support
- Free Installation/ Training
- 1 day lead-time (spare parts)
- 1 Month customize solution



Welcome Inquiry

Please visit www.smthelp.com

Find us more <https://www.facebook.com/autoinsertion>

Know more our team <https://cn.linkedin.com/in/smtsupplier>

Welcome to our factory in Shenzhen China

See more machine working video, please Youtube [Auto Insertion](#)

Google [Auto+insertion](#), to get more information

Looking forward to your email marie@smthelp.com